

VIEW ONLINE 



Asking Price:
\$798,000

FOR SALE | 404 HIGHWAY 378, Lexington | SC

±19.21 Acres: Residential and Commercial Land off Highway 378

- ±19.21 acres
- Development tract with residential or commercial viability
- Located along Lexington's main corridor
- Zoned ID
- Zoned for Lake Murray Elementary School, Beechwood Middle School and Lexington High School
- Utilities:
 - Water: Town of Lexington, on site
 - Sewer: Town of Lexington, across the street

Tax map number: 004200-02-010

This document has been prepared by Colliers International for advertising and general information only. Colliers International makes no guarantees, representations or warranties of any kind, expressed or implied, regarding the information including, but not limited to, warranties of content, accuracy and reliability. Any interested party should undertake their own inquiries as to the accuracy of the information. Colliers International excludes unequivocally all inferred or implied terms, conditions and warranties arising out of this document and excludes all liability for loss and damages arising there from. This publication is the copyrighted property of Colliers International and/or its licensor(s). ©2019. All rights reserved.

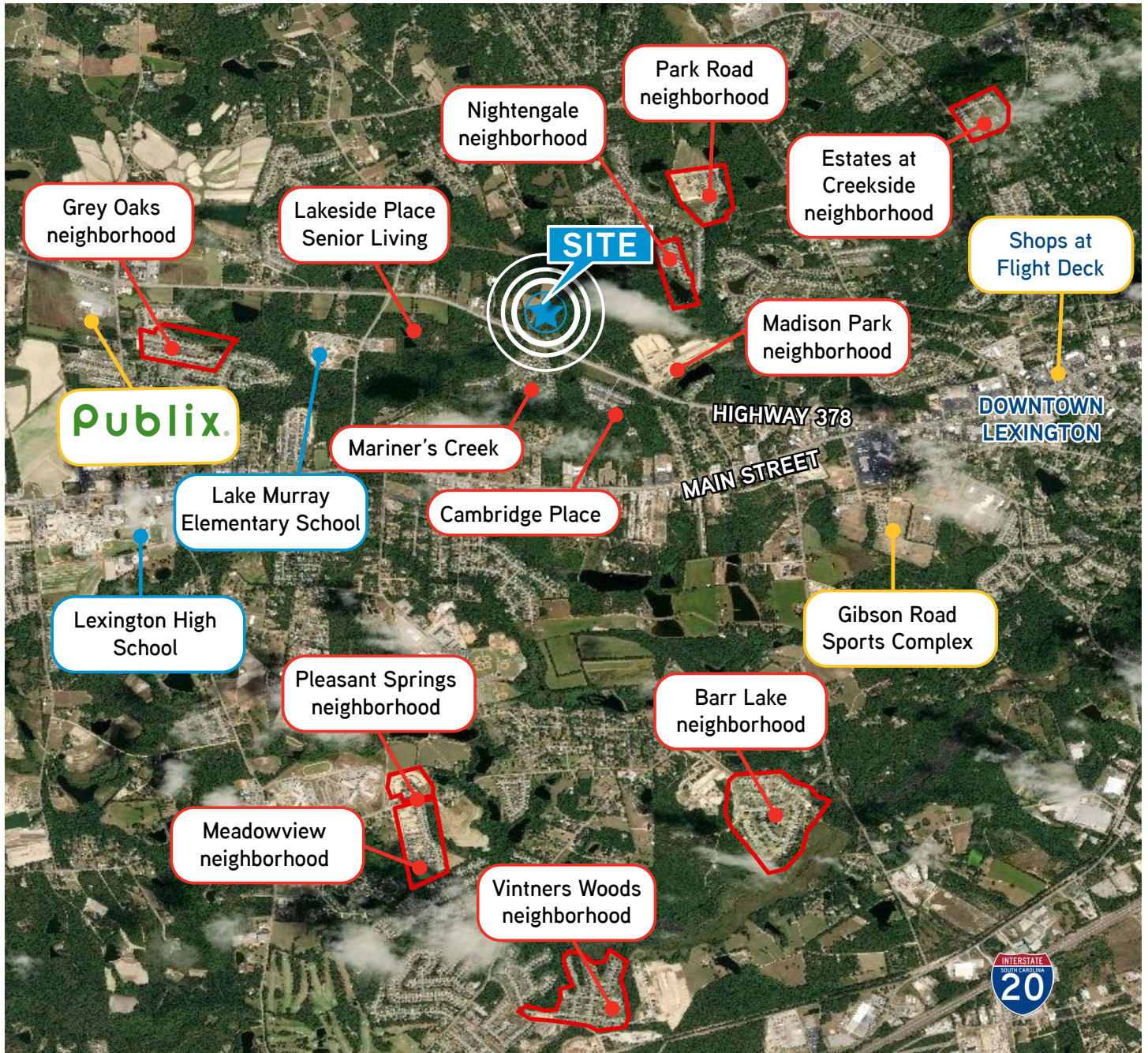
Ryan McCue
Brokerage Associate
803-401-4273
ryan.mccue@colliers.com

Colliers International
1301 Gervais Street | Suite 600
Columbia, SC 29201
www.colliers.com



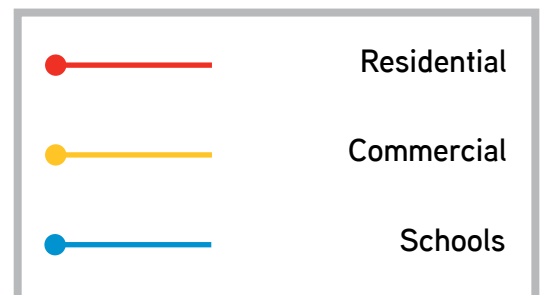
Accelerating success.

Development Map



About the area

Located along Lexington's main corridor US Highway 378, 404 Highway 378 is a location for prime residential or commercial developments. Lexington County is considered one of the fastest-growing areas in both the state and region and is known for its quality schools and high household incomes.



FOR SALE | 404 HIGHWAY 378, Lexington | SC



2019 Demographics



Population

1 mile: 3,085
3 miles: 30,439
5 miles: 63,014



Households

1 mile: 1,112
3 miles: 11,173
5 miles: 23,869



Average Household Income

1 mile: \$94,296
3 miles: \$102,088
5 miles: \$96,473



Projected Population (2024)

1 mile: 3,412
3 miles: 33,820
5 miles: 69,387



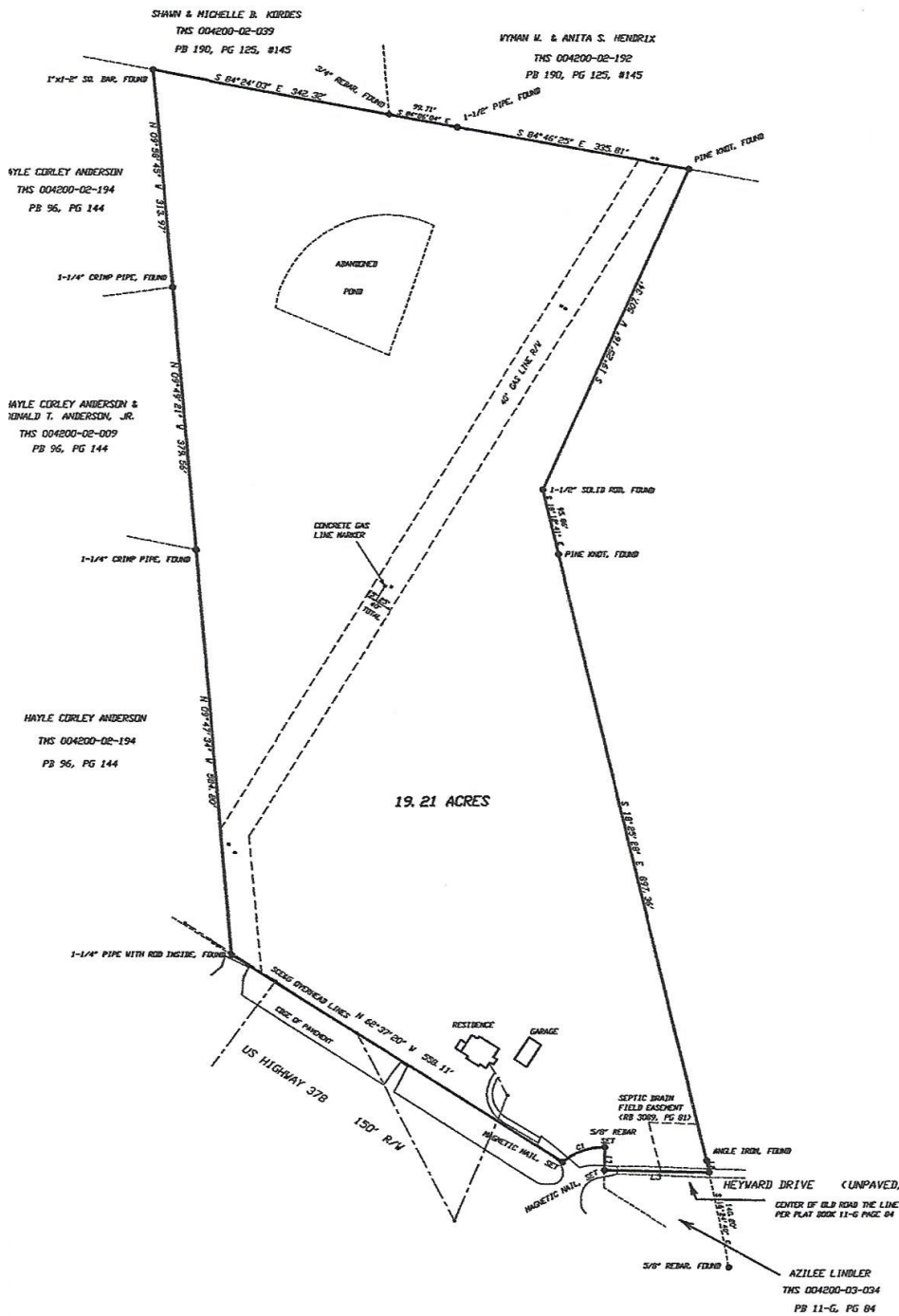
Projected Average Household Income (2024)

1 mile: \$106,961
3 miles: \$114,607
5 miles: \$109,278



Traffic Counts

US Highway 378:
14,200 (VPD)



Contact:

Ryan McCue
Brokerage Associate
+1 803 401 4273
ryan.mccue@colliers.com



Accelerating success.